

HUTCHIES' TRUTH



A QUARTERLY NEWSLETTER FOR HUTCHINSON BUILDERS

AUGUST 2013

HUTCHIES' Chatswood CBD project, Metro Residences, currently dominates Sydney's North Shore skyline.

The massive project involves 553 apartments over 110 floors across three separate towers built over the top of Chatswood

Out of this world!

Transport Interchange.

Worth \$225 million, it is one of the largest single projects Hutchies has ever undertaken.

Grand Tower is already the highest building on Sydney's North Shore skyline.

Hutchies' team leader, Brian

Hood, said the three towers were planned to be handed over on progressive completion.

"View Towers in March and Spire Tower in May next year with Grand Tower in January 2015," he said.



On some days Hutchies' workers at Metro Residences project on Sydney's North Shore are on cloud nine.

Team player on and off the field

FIRST year apprentice, Lennie Magey, is proving to be an outstanding team player – with Hutchies' Townsville crew and with the North Townsville Cowboys.

Lennie graduated from a 12-week

Tradestart program at Hutchies' Gold Coast School of Construction at Yatala before taking up an apprenticeship at the RNA showgrounds site in Brisbane.

He then transferred to Townsville to join Hutchies' team and to train with the North Queensland Cowboys.

Recently Lennie made his debut for the Cowboys in round five against Penrith in the 20s team.

He trains every night during the week with the Cowboys and plays on Saturdays.

During the day, he has been working with Hutchies between the Mater Hospital renovations and the new Coles supermarket at Thuringowa.

LEFT: Lennie Magey with mentor Hutchies' apprentice development coordinator, Andrew Becconsall.



Townsville's 'twin towers'



HUTCHIES' projects also have dominated the Townsville skyline for more than a year, with friendly rivalry between teams working on opposite sides of Flinders Street in the northern Queensland city's CBD.

A Brisbane team has been working on an office tower at 420 Flinders Street and a local team has been hard at it on Verde, a tower on the other side of the street, at 455 Flinders Street.

The two jobs have provided major benefits for subcontractors and suppliers who have been able to work on both and share labour on the neighbouring projects.

Full Story on Page 5



Highway hero



Dean with his trusty fire extinguisher.

HUTCHIES' Dean White is a hero in the eyes of fellow motorist, Enoch Behzadpour, whose car recently burst into flames on the highway near Brisbane.

Enoch fled the scene to call the fire brigade and when he returned he found Dean extinguishing the flames with his fire extinguisher.

"It was extremely scary as I could see the flames next to the fuel tank," said Enoch.

"I couldn't believe someone stopped to help in such a dangerous situation because everyone else was driving past watching me run from the blazing car.

"If it wasn't for Dean, the whole car might have either

exploded or simply burnt out.

"Dean displayed courage and selflessness. I am so grateful for his help and he is a true champion."

Enoch wrote to Hutchies, praising Dean as an excellent staff member and a hero.

"I will never forget this and from now on I will promote Hutchinson Builders in an extremely positive light due to Dean's actions that night," he said.

"He really deserves a medal as he risked his own life to save others and that is the true Australian way.

"I hope one day I can return the favour as I am truly grateful and will never forget his act of kindness and courage."

HUTCHIES had a record turnover of a little more than \$1.3 billion in 2012/13.

Profit was not quite up where we would have liked it, but OK considering the economic environment.

We were anticipating a drop in volume in the new financial year by as much as \$350 million from 2012/13 highs, due primarily to the decline in the resource sector.

However, the void is closing quickly as we secure good traditional building projects in the Queensland, Sydney, Melbourne, Hobart and West Australian markets.

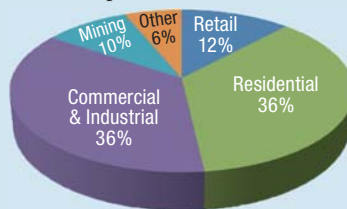
We now expect volumes for 2013/14 to be in the \$1.15 billion to \$1.3 billion range with margins also up on the previous year.

Our plan to consolidate within our existing geographical footprint and simply to maximise performance in every way possible is showing good results.

The breakup of our 174 projects around Australia is as shown in the pie charts below.

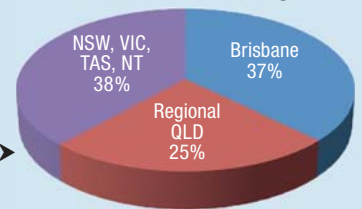
We are reasonably satisfied with the balance of work on our books and we will continue to fight hard to secure new opportunities to keep all of our 1,300 people plus subbies, suppliers and consultants fully engaged.

An emphasis on fundamental health



By Sector

By Region



- Greg Quinn

and safety objectives, superior quality, and meeting or bettering project time lines are all at the forefront of our drive for improvement.

Our "Quality Manual" is like the "Hutchies' Bible" - as it focuses on the 15 most significant and frequently occurring defects in the industry and sets guidelines for Hutchies' projects.

These compliance guidelines are being promoted on all sites with all Hutchies' people and subbies - with zero tolerance for non-compliance.

In our view, it doesn't cost any more to get it right, than it does to get it wrong.

It's all about preplanning, supervision and pride.

Over the past five years, Hutchies has been responsible for the construction of 27 office projects around Australia, totalling just less than \$1.2 billion, with all successfully achieving their Greenstar and Nabers ratings.

Our Santos Place project in Brisbane achieved Six Star Greenstar and Five Star Nabers - making it the largest and best performing office in Australia.

Currently we have eight new office projects under construction.



HISTORY

Mystery man of old yard

DURING research for Hutchies' centenary celebrations, this photograph of Hutchies' old yard in Montague Road, South Brisbane, was unearthed.

The site is under the Grey Street Bridge, where the Riverside Hotel stands today.

The photograph shows Ken Heers on the left and Eric Hutchinson (Jack's cousin) on the right.

However, the name of the young fellow in the middle remains a mystery.

If anyone can identify him, please contact Scott Hutchinson.



Hutchies on night shift in Moranbah underground coal mine.

TBM a world first at Moranbah mine

HUTCHIES is working with Anglo American and Redpath Mining Contractors to create a world first at the Grosvenor Mine at Moranbah by utilising a tunnel boring machine (TBM) to establish an underground coal mine.

Redpath Mining Contractors has been contracted by Anglo American to build and operate the TBM and Hutchies has been contracted by Redpath to construct the TBM's tunnel and structural concrete slabs.

As the TBM is constructed on the surface it will travel on rails embedded into structural concrete

slabs within a tunnel to reach its operating depth below natural ground level.

Hutchies' team established that night shifts were necessary to mitigate the interaction of two essential work fronts, earthworks and structural concrete works.

Separating the activities increased the safety of the teams and maximised the productivity of each.

Hutchies worked with Anglo and Redpath through the change management process to develop the procedures and systems to enable the mine to go to night shift.



Bill Hayden AC.

Secrets revealed at Foreign Affairs official opening

FORMER Governor-General, Labor Party Leader, Foreign Affairs Minister and policeman, Bill Hayden AC, chatted with Scott Hutchinson at the opening of the Department of Foreign Affairs and Trade's new state headquarters in Charlotte Street, Brisbane about his early days when he and Jack Hutchinson rowed together.

Scott reminded Bill that as a young cop he had pulled his father over for speeding – twice.

DFAT's office has moved to 150 Charlotte Street, having outgrown its old location in Ann Street.

The department occupies about 1500 square metres of floor space, the largest user of which is the Australian Passports Office.

The fit-out was delivered by Hutchies.

While ensuring that the department's physical and technical security needs are fully satisfied, the new office provides a light and open plan work environment that meets its functional and operational needs.

Boomerangs in learning curve an art form

DANIEL Blades, a student at the Toowoomba campus of Hutchies' Gold Coast School of Construction, has combined his love of construction with his talent for indigenous artwork.

Daniel recently presented the campus with a painting depicting the indigenous artist's view of his experience in learning about construction.

He explained that the four boomerangs in the middle of the artwork represented the four students in his group and the boomerangs around the outside represented the people who have guided them while they have been at the school.

The dots represent all the people they will come across in their working life and the wiggly lines around the corners represent the career path that may not always run straight.

Peter Rowse, GCSC campus coordinator, said he was humbled that Daniel had taken it upon himself to do the work for the college.

"Daniel's success on the course



Daniel with his work of art.

has represented a turning point in his life and this painting is his way of expressing that feeling," said Peter.

The GCSC delivers pre-trade programs at Toowoomba and at the main campus at Yatala near Brisbane.

The courses are designed to train passionate, future leaders for

a construction career at Hutchies or its subcontractor partners who support the programs.

Toowoomba is currently delivering a pre-trade course in partnership with Arrow Energy and Energy Skills Queensland to help young indigenous men and women prepare for a career in the construction industry.

Help with your butt

HUTCHIES' QUIT health initiative received a strong response, with a large number of team members, subbies and family members taking up the free Quit Smoking campaign.

Quitline will provide nicotine replacement patches and telephone support to keep participants on track.

For help email safety@hutchinsonbuilders.com.au for registration or information.

Good timing on joint venture with Kiwi economy set to fly

THE formalising of the joint venture between Hutchies and Naylor Love, one of New Zealand's largest national construction firms, is timely with the Kiwi economy set to take off.

Hutchies' chairman Scott Hutchinson said that, while Australia struggled with weakening demand for its mineral resources, New Zealand's government and corporate activity was on the rise.

"New Zealand is a bright spot in the world economy," said Scott.

"Hutchies' size and strength brings critical mass to the market at a time when the scale of planned development may exceed the available resources.

"We are really excited about this opportunity and proud to be

working with Naylor Love.

"We have followed their growth over the years and we are looking forward to our new relationship."

Both of the privately-owned joint venture companies are debt-free which provides a sound base for managing and completing large projects.

Naylor Love director, Scott Watson, said the joint venture would tackle major rebuild projects while still providing the same quality of service to the existing client base.

"Basically, it's business as usual around the country, but we now have an additional resource not previously available in New Zealand," he said.

"I think it would be rare that two



Scott Hutchinson and Scott Watson formalise the joint venture between Hutchies and Naylor Love.

100-year-old businesses with such similar values have the chance to combine their experience in this way."

Naylor Love has a high-profile presence in the rebuild of Christchurch city.

It is currently working on the construction of the Christchurch Cardboard Cathedral, the Isaac Theatre Royal and will shortly commence the Moorhouse Enter-

tainment Terminal (MET).

With a joint turnover of more than \$1.8 billion, the alliance provides the platform to undertake major anchor projects as well as servicing the ever-growing private construction market.

Naylor Love is one of the largest national construction companies in New Zealand, with five main operating divisions around the country.

Growth sprouts from a change in legal and political landscape

WITH a change in the local council and a courtroom victory over retail giant Westfield, Tipalea Partners has broken ground on a \$30 million shopping centre project at Pimpama on the Gold Coast.

Tipalea appointed Hutchies to build the 5,400 square metre Pimpama Junction shopping centre, anchored by a Woolworths supermarket on a 2.4 ha site on the corner of Yawalpah Road and Dixon Drive.

Scott Spanton, managing director of Tipalea Partners, said the ground-breaking ceremony had been a great start to the project.

"I was very impressed with Hutchies' team – all very professional," he said.



From left, Woolworths regional property manager, Phillip Peel; Tipalea Partners managing director, Scott Spanton; and Hutchies' project manager, Russell Fryer, at the Pimpama Junction ground-breaking ceremony.

"It was the most fun I've ever had with a project kick-off and look forward to a great project together."

He said the project had taken longer than expected and it had not been an easy ride, but the partners were

excited to get to the present stage.

Scott said Tipalea had been attracted to Pimpama because of its growth projections, with the area surrounding Pimpama Junction undergoing a major transformation with large-scale residential development by Mirvac, Leda Holdings, Devine Homes and A.V. Jennings.

"A year ago I had ruled out ever doing another project on the Gold Coast because the previous council regime was not very supportive, but the new council has been great and, after 12 months in court, we won convincingly," he said.

"Now it is all systems go." Tipalea has four projects

underway in Queensland, another two under consideration and is now actively seeking new retail and residential projects, particularly in the south east corner.

About 70 per cent of the retail space in Pimpama Junction has been taken up with the leasing team targeting national and regional tenants, including restaurants, take away outlets, a newsagency, real estate agent and hairdresser for the remaining shopping space.

Scott said Pimpama Junction had zero competition on the eastern side of the M1 Motorway and a sizeable incentive budget to assist selected tenants.



HUTCHIES has finished work on the first Masters Home Improvement centre in Mackay. Built at a cost of more than \$14 million, the centre consists of 13,000m² of floor space with a dedicated garden centre and a 373-space carpark.

It's official, he's a jolly good fellow

CHRISTOPHER Chainey from Brisbane office has been admitted as a Fellow of the Australian Institute of Building.

Fellow is the highest rank bestowed by the Institute and is reserved for members held in high esteem by the profession and for those who have an outstanding history of achievement and excellence in the industry.

Hutchies' congratulations on an outstanding achievement, Chris!



Chris (centre) receives his certificate as Fellow of the Australian Institute of Building from Robert Whittaker, AIB National President, (left) and John Gaskin, AIB Queensland Chapter President.

Verde – green, cyclone proof and self-sufficient

IN addition to being designed to meet environmental sustainability benchmarks, the 12-level Verde project in Flinders Street, Townsville is designed to Building Code of Australia (BCA) Importance Level 4 which means it has been built to withstand cyclones.

In the event it is cut off from all essential services during a disaster, the BCA rating ensures the building can be self-sufficient.

As it is destined to house a number of State Government departments, one floor has been designated to be used as a disaster recovery centre.

Longtime Hutchies' friend Steve Gosling has headed up the development since inception.



Verde at 455 Flinders Street, Townsville has been built to withstand cyclones.



Removal of Hutchies' construction scaffolding has revealed a stunning new streetscape sculpture for Townsville at 420 Flinders Street.

Fins in Flinders frenzy

A NEW \$40 million office tower built by Hutchies in Townsville's CBD is truly a work of art.

The nine-level tower, bounded by Flinders, Stanley and Ogden Streets, was designed by architects, Arkhefield, and features a wall of aluminium blades which helps deliver not only an environmentally

sustainable building but also a stunning skyscraper sculpture.

The perforated aluminium fins improve the thermal performance of the building which has a four-and-a-half star Green Star and National Australian Built Environment Rating system certificate.

The fins also add a touch of style and glamour

to Townsville's tropical streetscape.

The project was a joint venture by local developers, Laurence Lancini and Mark Adams, with the State Government owner Ergon Energy leasing the top six floors of office space and two levels of carparking.

The project came in several months ahead of schedule.

AS the staff relocated into the new building last Friday and the work with Hutchinsons draws to a close, it seems that gratitude must be passed onto you.

Rob, you and Adam have been great to work with through this building process.

I acknowledge for Adam it was difficult at times, however, the outcome is a fantastic building for the Toowoomba Youth Service.

The workmanship is excellent and the details in the building are excellent thank you.

Adam, you are an asset to Hutchinsons. Your communication ability to liaise and work through queries is commendable, not to mention your knowledge of the building processes.

I look forward to some media coverage on this wonderful new office.

Regards,
Rhonda McGarry

FEEDBACK



•••

THIS is just a quick email saying thank you.

We believe that there has been some negativity around the upgrade of the Sandgate Station and instead we would like to give some positive feedback.

We cannot speak highly enough of the Hutchinson workers and the contractors working with them.

Your team have been polite, extremely courteous and always happy to help in any way.

They have always done their best to help us in and out of our street, especially if there are delivery vehicles around.

They have always kept the street as tidy as they could and would

clean up any rubbish if it had blown out of the bin, even picking it up off our grass.

We have always been notified of any after hours work, which helps greatly.

Your team have done a really great job with such limited access around the work site.

We are very happy with the upgraded platform, it really looks great.

Can you also please pass on our thanks to the workers onsite.

Regards,
Tony and Gabriella

•••

ON behalf of Janek and our Board, I wanted to acknowledge the tremendous effort by Hutchies in

delivering Oshen.

The achievement of five pours in June was an excellent performance to program.

We appreciate Cy Milburn's persistence and his proactive approach and long term view on critical quality issues such as waterproofing.

Barry Bowers and the broader team have impressed us with their productivity and organisation.

We recognise the considerable hours that are being put in to get the job done and appreciate the attention given to fostering good site morale.

With just over 20 weeks remaining, there are plenty of challenges ahead, however, we are looking forward to supporting Hutchies in any way we can to achieve completion before Christmas.

Sandy Murdoch,
Director, Concept Living Properties

Excellence Award for heritage rail work

IN the recent Australian Institute of Building Professional Excellence Awards, the hottest contended category was for Commercial Construction \$1 million to \$10 million and, despite Lend Lease and Leighton Contractors in the same category, Hutchies successfully received the top award for the upgrade of Queensland Rail's South Brisbane Station.

The project required the refurbishment of a 1891 heritage-listed working railway station in a busy inner-city residential, business and tourist precinct.

The work included a non-negotiable short work timeframe in an electrified rail network.

The work was completed on time, within budget and involved creation of innovations that are now standard practice for Queensland Rail.

RIGHT: Shown at the AIB Awards night are (from left) Brent Nowland, Michael Tickner, Barry Butterworth, Christopher Chainey and Darryl Morris.



(Photo: Narelle Robinson)

Pictured at the AIA 2013 Queensland Architecture Awards (L-R) Andrew Gutteridge, Principal, Arkhefield; Matthew Smith, Architect, Arkhefield; Scott Hutchinson; Shane Thompson, Queensland Chapter President, and Principal, Shane Thompson Architects; Mark Damant, 2013 Queensland Awards Jury Director, and Principal, Woods Bagot.

Award winning performances

HUTCHIES-BUILT projects were among the winners at the recent Australian Institute of Architects' 2013 Queensland Architecture Awards.

Projects that received a Named Award or an Architecture Award now progress to the 2013 National Architecture Awards to be announced in Sydney on November 7.

Hutchies' jobs in the line-up for Awards were (winners in bold)...

• **Circa CTI – Nundah** – State Award for Commercial Architecture

- Surfing Australia High Performance Center HPC – Casuarina
- Energex Headquarters – Newstead
- **Energex Newstead Riverpark Workplace – Newstead** – State Award for Interior Architecture
- Circa Energex NMO – Nundah
- **TYTO Cultural Precinct – Ingham** – State Commendation for Public Architecture
- **Cooroy Library – Cooroy** – Colorbond Award for Steel Architecture
- **SW1 South Bank – South Brisbane** – State Commendation for Urban Design.



Starlight's bright night a highlight

HUTCHIES' Sydney team recently held its annual charity night which raised \$43,000 for the Starlight Children's Foundation.

The Starlight Children's Foundation has been brightening the lives of seriously ill and hospitalised children, and

their families, throughout Australia since 1988.

Shown at the charity night are (from left) Scott Hutchinson, young Jack Hutchinson and actor, Shane Jacobson, who was MC for the event.



Pictured (L-R) are Hutchies' Dave Warner; Mayor Paul Pisasale; Ian Berry, MP for Ipswich; and Mark McArdle, Queensland Minister for Energy and Water Supply.

MAYOR of Ipswich, Paul Pisasale, recently made an inspection tour of Icon Tower A in Ipswich to view the completed project.

The billion dollar Icon Ipswich project in the CBD is considered the city's greatest urban renewal asset.

New uni opens on Gold Coast/Tweed

GOVERNOR of Queensland, Penelope Wensley, recently officially opened the second stage of the Southern Cross University's Gold Coast campus, built by Hutchies.

The 10-storey facility houses specialised teaching and research spaces and complements the original building at the campus which opened in 2010.

Funding for a third building, which has been received from the federal government, will take investment at the campus to approximately \$100 million.

Vice Chancellor Professor Peter Lee said the event was a significant milestone in the University's plans to create a cutting-edge learning environment for students of the southern Gold Coast and Tweed Heads.

The new building includes clinical laboratories for nursing and midwifery, laboratories for occupational therapy students and physiology, anatomy and biomechanics laboratories for podorthics, podiatry and speech pathology.



Queensland Governor Penelope Wensley with Vice Chancellor Professor Peter Lee (left) and Chancellor John Dowd at the official opening of Southern Cross University's new building on its Gold Coast campus.

It also provides learning spaces to pursue studies in tourism, business, arts and social sciences and education.

Student facilities include computer rooms, meeting rooms and a student lounge.

The building also includes the SCU Health Clinic which is open to the public and offers a range of health practitioner services, as well as supporting student learning and clinical research.

SCU Chancellor John Dowd said the expanding campus would add scholarship to the sun, sand and surf lifestyle of the southern Gold Coast.

Chancellor Dowd said there was a pressing need for higher education on the Gold Coast, with about one in five people aged between 25 and 34 possessing a Bachelor degree or above – around half the national average.

Final act at the Empire

HUTCHIES has been awarded the third and final stage of the redevelopment of the Empire Theatre in Toowoomba which involves construction of the \$5.5 million Toowoomba Regional Arts and Community Centre.

The new project will see a 350-seat black box theatre added to the Empire to provide a mid-size venue for community and arts events.

Hutchies has worked on the previous redevelopment stages.

Toowoomba Library and Cultural Services spokesperson, Cr Ros Scotney, said it was fantastic to see Hutchies, a local company, win the tender and continue its great relationship with the Empire Theatre.

Construction is expected to be finished mid-2014 with funding provided by the Toowoomba Regional Council, the Federal Government and community donations.

Company values clinch a prestige riverfront project

TRUSTWORTHINESS, innovation, experience and quality are the company values that led to Hutchies being appointed to build the fifth residential tower in a prestige riverside project in Brisbane.

Brookfield Residential Properties has announced that Hutchies will build Pinnacle at Portside Wharf, a mixed-use retail and residential precinct along the Brisbane River in the blue-chip suburb of Hamilton.

Pinnacle at Portside Wharf will be a 16-storey residential building, comprising 168 luxury apartments, penthouses and terrace homes, with completion scheduled for early 2015.

Brookfield Residential Properties project director, Lee Butterworth, said it was vital to partner with one of Australia's most trusted construction companies.

"Brookfield made an 'all of business decision' to seek tenders from a selection of apartment builders with suitable experience on quality projects," he said.

"Hutchinson Builders are a perfect fit, with experience in delivering multi-storey, quality apartment buildings."

Mr Butterworth said with



Pinnacle at Portside Wharf, a mixed-use retail and residential precinct along the Brisbane River in the blue-chip suburb of Hamilton.

Pinnacle at Portside Wharf earmarked to become a Brisbane icon, it had been important for Brookfield Residential Properties to find a respected and innovative construction company that would deliver a product of superior quality.

"Pinnacle will boast the finest residences at Portside Wharf and some of the best riverfront homes in Brisbane and we trust Hutchin-

sons to deliver this world-class product."

Chairman Scott Hutchinson said Hutchies was pleased to partner Brookfield Residential Properties and would bring quality and timely execution to the development.

"We are thrilled to work on a project of this calibre and with a company of such integrity," said Scott.

"Portside Wharf is one of Bris-

bane's most sophisticated retail, dining and residential precincts and it is great that we can play a part in what is fast becoming an iconic development."

Designed by Noel Robinson Architects, Pinnacle at Portside Wharf will be the fifth residential building at the riverside precinct after Loft, Infinity, Flare and Promenade.

Pinnacle has an absolute waterfront position with views of the river and city which can never be built out.

With Stage One sold out, the second stage is now selling, with one-bedroom apartments available from \$435,000 and two-bedroom apartments from \$545,000.

Mr Butterworth said the launch of Pinnacle was a huge step forward for Portside Wharf which was destined to become one of Brisbane's finest entertainment and residential precincts.

Portside Wharf is home to more than 30 retailers, including Dendy Cinema, IGA Supermarket, Jetts Fitness, Urbana and Elle Bache, as well as restaurants including Sono, Byblos, Gusto da Gianni, Restaurant Manx and Belvedere.

www.pinnacleportside.com.au

Gift of appreciation



Shown at the presentation are (from left) Gareth Davies, Collette Walsh, Monica Walsh, James 'Jimmy' Walsh and Scott Hutchinson.

ON behalf of Hutchies, Jimmy Walsh recently handed over a cheque for \$10,000 to the Brain Injury Rehabilitation Unit at PA Research Foundation.

Hutchies made the gift in appreciation of the outstanding work done by the hospital unit to help Jimmy following his workplace injury.



Stretch of the imagination

RAI Malisauskas from the Gold Coast School of Construction has created learning resources to enable Hutchies to deliver a course in stretcher bearing.

GCSC is now able to deliver

this training at short notice to any site, with participants receiving their statement of attendance in the same week.

Team leader, Chris Chainey, was one of the first to take up the offer at his Sandgate

site where participants (from left) Lincoln Shepard, David Barker, Michael Tickner (partly obscured), Matthew Cannon, Darryl Morris and Heidi Burl are shown enjoying their new found skills.



Sports heroes revival THE annual Tweed Boys' Weekend was held this year at Emerald Beach near Coffs Harbour where they went dressed as their old sports heroes. Word is the only sport actively pursued that weekend was drinking. Pictured (L-R) are Shane Snape, Scott Vidler, Murray Emmerson and Dan Gallagher.



Teamwork

HUTCHIES' Matt Jonker and Simone Vugs made a lopsided scrum first row when they packed down with Alfie Langer at the Broncos v Titans match.



Rugby great passes on motivational tips

RUGBY league legend, Darren Lockyer, visited Reedy Creek 400-Man Camp project earlier this year as part of Australia Pacific LNG/Origin Energy's 'Every Day is Game Day' campaign.

The intention of the day was to focus on teamwork, planning and communication as a means of improving performance and safety standards on the project.

Staff and subcontractors competed in football related games and the blue and white team, which included several Hutchies' project members, won the final which included a blindfolded obstacle course challenge.

The prize was autographed footballs and a photo opportunity with Darren.

Darren's visit also included a smaller meeting where site

management members were able to ask Darren about leadership and motivating teams.

His visit concluded with a walkthrough the project where Darren was suitably impressed by the clean and well organised site.

The Reedy Creek project was completed by the Rob Weymouth team four weeks ahead of schedule with zero LTI's.



Shown getting up close and personal with a Bunnings' staffer is Hutchies' site manager, Leo de Boer.

Bunnings' barbecue galore

BUNNINGS recently hosted a barbecue for the team working on the Elysium House project at Noosa.

As well as Hutchies' team, tradies on site included WL and M Fogg Building Services (carpentry); Actions Plasterers and Renderers; and CV Services (electrical and air conditioning).

Hard labour for the chain gang

HUTCHIES' apprentice, Patrick McCarthy, joined the Hutchinson Builders/Bank of Queensland team to compete in the recent Chain Reaction Challenge Queensland 2013, billed as the ultimate corporate bike event.

More than 40 Chain Reaction riders cycled 1,100 kms around Queensland and New South Wales in seven days to raise funds for charity.

The event raised \$780,000 for the purchase of an Echo Cardiograph machine for the Royal Children's Hospital in Brisbane and a new AEIOU Foundation centre on the Gold Coast for children with autism.

Hutchies was a major sponsor for the challenge.

Chain Reaction Challenge Foundation CEO, John Ward, described the amount achieved as "a fantastic result."

"Hutchies' involvement certainly helped us reach this amazing fundraising level," said John.

Formation of the Hutchinson Builders/Bank of Queensland team continues a long-standing relationship between Hutchies and Bank of Queensland.

Hutchies has been a Bank of Queensland customer for almost 50 years – since Jack took out a business loan for company expansion.

Hutchies also is currently building the bank's new headquarters at Newstead in Brisbane.

School foundation for career

WHEN Maryanne Walsh, principal of Centenary Heights State High School in Toowoomba, approached Hutchies for a trailer for student use, she was thinking of something second-hand.

But, instead, she received a brand new one – thanks to Robert Weymouth, a former student and now Hutchies' local area manager.

Robert said Centenary Heights had been a great foundation for building his career.

"When I left school I was an apprentice carpenter and then went on to get a degree in building from QUT," said Robert.

"Now I have returned to Toowoomba with Hutchies.

"It feels good to give something back."

And what he gave back is a custom-built trailer that will be used to store tools and to move them around the campus for jobs the students are working on with their teachers.

Ms Walsh said the trailer was representative of the valuable relationship between schools and the wider community.

"We love Hutchies – they have done a lot of work at the school in the past," she said.

"The future of schools lies in community networking.

"We need to do great work in schools to give employers a reason to employ our kids."



Members of the Hutchinson Builders/Bank of Queensland Chain Reaction Challenge Team (L-R) Doug Snell of BOQ, Hutchies' Patrick McCarthy and John Walklate of CBRE.

Desert trek to Birdsville Pub a challenge



Peter and other team members trekking across the Simpson Desert.

PETER Anderson, development manager of Property Solutions, was sponsored by Hutchies as part of a team of adventurers who recently walked across the Simpson Desert to raise funds for young people who need full-time care.

The 300km walk finished at the Birdsville Pub where a bigger than usual celebration was held.

Peter said he appreciated Hutchies' support particularly because the building industry had been doing it tough lately.

He survived the ordeal in good shape.

"Sore toes, legs and feet but otherwise unscathed," Peter reported.

"I have certainly had no other challenge like this," he said. "It was great to be part of it and collectively we raised around \$600,000.

"Now there will be more facilities for Youngcare and that means a lot to the young people of Australia in need of full-time care."

Big Red Noses in fun(d) raisers



THE Metro Residences Chatswood Red Nose Day site communication meeting BBQ breakfast raised a total of \$16,000 for SIDS and Kids NSW ... thanks to Scott Hutchinson who matched the morning's fundraising dollar-for-dollar.

Special mention to Kev Hopping for leading the successful organisation of this event and to Zenith Workforce who donated \$2500.

Scott Hutchinson presented the chairman of SIDS and Kids, Peter Kaye, with the cheque at the conclusion of the breakfast.



HUTCHIES' Toowoomba team supported Red Nose Day with a morning tea where Andrew Douglas won the Red Frog guessing competition and Nicole Apelt won the \$500 dollar money board prize.

Outstripped at sleepover



Robert ready for bed at the Vinnies Community Sleepout.

HUTCHIES' Robert Weymouth raised a staggering \$16,000 in the recent Vinnies Community Sleepout on the Darling Downs where the conditions were cold and wet.

Robert easily outstripped his target of \$3000, helped by his sponsorship from Hutchies which included \$300 to wear a onesie and \$500 to wear budgie smug-

glers – and he obliged with both. “The temperature was six degrees and it was pouring rain, so it was not real pleasant,” said Robert.

“But I was amazed by the generosity of my sponsors and I thank you all for your kindness.

“I am really pleased with the result which will help some less fortunate people.”

Pinball wizard

A PINBALL machine installed in the main foyer at Toowong in Brisbane for the amusement of Hutchies' clients also is proving popular with team members.

Chairman Scott Hutchinson demonstrates his skill in the after hours pinball competition – showing clear signs of a misspent youth.



Boys set up in the box seat

WHEN Bulldogs played the Knights in the NRL recently in Mackay, the Hutchies' boys working on the Mackay Multisports Stadium construction site next door were left sitting pretty.

They created their own VIP box and had the best seat in the house.



Spiderman

RODNEY Kemp is now known as 'Spiderman'. While Hutchies' team was excavating a retaining wall footing at the Oshen apartments site in Yeppoon, an eight-legged hairy monster made its appearance. After a brief scuffle, Rodney had the monster captive and later released it safely away from excavators, shovels or the soles of steel-capped boots.



Scouts' Honour

With continuing support from Hutchies, the Scout Association's 62nd consecutive Gang Show was held recently at the Schonell Theatre at the University of Queensland. The show had a cast of 90 on stage and 140 behind the scenes to show the community the enthusiasm and diversity of the Scouting lifestyle. Hutchies' Dean White (in brown jacket at front row right) is pictured with the cast.



Half marathon winner in the Yuleba Fun Run, Lachlan Hanly.

Whole town turns out for fun

WITH a population of 212, the little town of Yuleba in outback Queensland managed to produce 210 starters in the inaugural Yuleba Fun Run to raise funds to help families affected by Wolf-Hirschhorn syndrome.

The event raised \$70,000 which will provide grants for in-home support, respite care and vehicle modifications.

Hutchies was one of the major supporters of the Fun Run at Yuleba, which is nearby the Reedy Creek Accommodation Camp job site.

Other major sponsors included Newlands Civil Construction, Golden Pastoral Holdings, Exegen, Laing O'Rourke, Jones Air and Redgum Wealth.

In a league of their own

PERFECT conditions welcomed players at the recent Ron Atkins Charity Golf Day at Keperra Country Golf Club.

More than 100 players teed off in the event organised by the Men of League Foundation to raise funds for rugby league friends who have fallen on hard times.

Hutchies was a sponsor and Men of League secretary, Vance Rennie, said it was through the generous support of organisations like Hutchies that the league was able to help those in need.



Like us on **Facebook**:
<http://www.facebook.com/hutchies1912>
 Follow us on **Twitter**:
<http://twitter.com/hutchies1912>
 See our company page on **LinkedIn**:
http://www.linkedin.com/company/91031?trk=pro_other_cmpy



AFTER 13 years with Hutchies, health and safety manager, Paul Adams, hands his crown of authority over to his successor, Gareth Davies, at a farewell function. The crown once belonged to the fake Tahitian prince and was bought at a Queensland government auction by Scott's mate, Damian Bender.



Cairns' weekend warriors

HUTCHIES' Cairns team couldn't decide what to do for the annual boys' weekend away – golf or fishing. So they did both and took off for Cooktown for a weekend of golf and fishing.

Pictured (L-R) are Aidan Ahearn, Greg Hampton, Peter Singleton, Kyle Hare, Ben Starchenko and Paul de Jong.

ALLURE APARTMENTS – TOWNSVILLE

Job Value: \$9,772,292

Job Description: This seven-storey residential apartments project comprises 42 units and five retail tenancies on the ground floor

Hutchies' Team Leader: Mark Phillips
 Hutchies' Project Manager:..... Alex Seydel
 Hutchies' Administrator:..... Dan Gallagher
 Hutchies' Site Manager:..... Garry Smith
 Hutchies' Cost Planner:..... Dave Balson
 Architect Firm:..... Brad Read Design Group
 Structural Engineering Consult: Empire Engineering
 Electrical Consultant:..... Ashburner Francis
 Consulting Engineers
 Client:..... South Townsville
 Developments
 Superintendent:..... KHA Development
 Managers

BOAGS CO2 PLATFORM – TASMANIA

Job Value: \$185,284

Job Description: This is an upgrade of the CO2 production facility in an active brewery which includes removal of roof sections, trusses, installation of a new steel platform, stairs and roof beams, new roof sheeting and cladding plus three concrete equipment plinths.

Hutchies' Team Leader:..... Mick Connolly
 Hutchies' Project Manager:..... Joe O'Byrne
 Hutchies' Administrator:..... Ian Ramsden
 Hutchies' Site Manager:..... Steven Simeoni
 Hutchies' Cost Planner:..... Brian King / Joe O'Byrne
 Architect Firm:..... Pitt & Sherry
 Structural Engineering Consult: Pitt & Sherry
 Client:..... Lion – Beer, Spirits & Wine

MASTERS HOME IMPROVEMENT – MACKAY

Job Value: \$14.35M

Job Description: The construction of the first Masters Home Improvement centre in Mackay, consisting of 13,000m² of floor space, with dedicated garden centre area. Build was micro pile with tilt-up panels and a structural steel frame, zincalume metal roof and alucobond cladding to the external with a finished internal burnished concrete slab.

Hutchies' Team Leader:..... Levi Corby
 Hutchies' Project Manager:..... Neil Middleton
 Hutchies' Site Manager:..... Shaun Power
 Hutchies' Supervisor:..... Adam Francis
 Hutchies' Cost Planner:..... Brendan Kavanagh
 Architect Firm:..... Leffle Simes Architects
 Structural Engineering Consult: Farr Engineers Associates
 Civil Engineering Consultant: Farr Engineers Associates
 Quantity Surveyor:..... Rider Levett Bucknall
 Electrical Consultant:..... Brisbane Electrical
 Client:..... Hydrox Nominees

WOOLWORTHS – AIRLIE BEACH

Job Value: \$8.4M

Job Description: Construction of a new 2800m² Woolworths supermarket which will adjoin the existing Airlie Beach Village Retail



Centre with a pedestrian linkway. Hutchies' design & construct ability has delivered a feasible development for Woolworths, resolving the existing poor ground conditions proving the greatest challenge. The retail development has future expansion plans for an additional 600m² of supermarket floor space and 1000m² of retail tenancy.

Hutchies' Team Leader:..... Levi Corby
 Hutchies' Project Manager:..... Neil Middleton
 Hutchies' Administrator:..... Andrew Peters
 Hutchies' Site Manager:..... Cody Harris
 Hutchies' Cost Planner:..... Brendan Kavanagh
 Architect Firm:..... Buchan Group
 Structural Engineering Consult: Farr Engineers Associates
 Civil Engineering Consultant: Farr Engineers Associates
 Electrical Consultant:..... Floth Sustainable
 Building Consultants
 Client:..... Fabcot

AIRLIE BEACH HOTEL

Job Value: \$1,428,364

Job Description: The planned additions and extensions to the Airlie Beach Hotel includes exterior renovations over two stages. Stage 1 includes the demolition of existing awning and shade sails and erection of new front awning/shade sail structure. Stage 2 comprises the demolition of existing pool, airclock to adjoining restaurant/bar, concrete pathways and vegetation. The pad is to be built up around Stage 2 and completed with timber decking and new swimming pool.

Hutchies' Team Leader:..... Levi Corby
 Hutchies' Project Manager:..... Neil Middleton
 Hutchies' Administrator:..... Jared Malan
 Hutchies' Site Manager:..... Adam Francis
 Architect Firm:..... Brand + Slater
 Architects, Brisbane
 Structural Engineering Consult: Thomson Engineering
 Civil Engineering Consultant: Thomson Engineering
 Electrical Consultant:..... Electrical Design Group
 Client:..... Airlie Beach Hotel

APLNG TRACKS B, 3, 5 AND 7

Job Value: \$15M

Stage 1: Tracks 3, 5 and 7 – \$6,265,000.

Stage 2: Tracks B and G and laydown areas approx. \$8M

Job Description: The work includes clearing, grubbing, sediment and erosion control, waterway crossings, topsoil strip, ground surface treatment, earthworks, pavements and road furniture to approximately 36km of access roads on Savida, Seven trees, and Nullin which are operating beef cattle proper-



Artist's impression of the Newman Golf Club currently under construction.

ties two hours north west of Roma. To deliver the project and others the Toowoomba team is creating a new civil department including a new project manager, site manager, project engineer and environmental advisors.

Hutchies' Team Leader:..... Robert Weymouth
 Hutchies' Project Manager:..... Matthew Dawson
 Hutchies' Supervisor:..... Nathan James, Will
 Thurston (rotation roster)
 Hutchies' Cost Planner:..... Bevan Austin
 Client:..... APLNG

FORTESCUE GOLF CLUB – WESTERN AUSTRALIA

Job Value: \$1.85M

Job Description: This design and construction project involves extension and refurbishment including new bar, kitchen, function room and amenities at the Newman Golf Club.

Hutchies' Team leader:..... Harry White
 Project Manager:..... Harry White
 Administrator:..... Jacob Carter
 Site Manager:..... Andrew Taubman
 Cost Planner:..... Frank Moes
 Architect Firm:..... Vabasis
 Structural Engineer:..... ADG
 Client:..... RPS / BHP

MORANBAH COMMERCIAL DEVELOPMENT

Job Value: \$3,670,420

Job Description: The project in Bacon Street, Moranbah consists of a new two-storey commercial development with car parking facilities for 69 cars. The development is divided into six tenancies to house a mess hall for an adjacent workers camp, Dominos Pizza, gym, laundromat and office spaces with both public and tenancy specific amenities.

Hutchies' Team Leader:..... Michael Michell
 Hutchies' Project Manager:..... Dave Smythe
 Hutchies' Administrator:..... Donna Janson
 Hutchies' Site Manager:..... Scott Woods
 Hutchies' Cost Planner:..... Terry Ly
 Architect Firm:..... Cool Architecture

BIG W KARRATHA WAREHOUSE

Job Value: \$3,382,823

Job Description: Project involves 1,470m² of warehouse space with 603m² for two trade displays and a showroom for Samios Plumbing Supplies and CNW Electrical and Data Supplies.

Hutchies' Team Leader:..... Harry White
 Hutchies' Project Manager:..... Cy Milburn
 Hutchies' Administrator:..... Dominic Rakei
 Hutchies' Site Manager:..... Adam Beard
 Hutchies' Supervisor:..... Joe Licastro
 Hutchies' Cost Planner:..... Frank Moes
 Architect Firm:..... Think Tank Architects
 Structural Engineering Consult: ADG Consulting
 Engineers
 Civil Engineering Consultant:..... Yeats Consulting
 Engineers
 Hydraulic Consultant:..... Hydraulic Designs
 Queensland
 Electrical Consultant:..... Building Services Design
 Client:..... Metalsea / BGW Group

Client's Representative:..... Loveday Construction
 Services

MAREEBA HOSPITAL

Job Value: \$2M

Job Description: Upgrade to electrical, mechanical, hydraulic and fire services infrastructure including new fire partition works.

Hutchies' Team Leader:..... Paul De Jong
 Hutchies' Project Manager:..... Kyle Hare
 Hutchies' Administrator:..... Kyle Hare
 Hutchies' Site Manager:..... Rob Mahony
 Hutchies' Cost Planner:..... Chris Hattingh
 Architect Firm:..... GHD
 Structural Engineering Consult: GHD
 Civil Engineering Consultant:..... GHD
 Quantity Surveyor:..... Donald Cant Watts Corke
 Electrical Consultant:..... GHD
 Client:..... Queensland Health
 Other:..... Point Project
 Management

ATHERTON HOSPITAL

Job Value: \$5.5M

Job Description: Upgrade to electrical, mechanical, hydraulic and fire services infrastructure including new fire partition works.

Hutchies' Team Leader:..... Paul De Jong
 Hutchies' Project Manager:..... Kyle Hare
 Hutchies' Administrator:..... Kyle Hare
 Hutchies' Site Manager:..... Kent Beavon
 Hutchies' Cost Planner:..... Chris Hattingh
 Architect Firm:..... GHD
 Structural Engineering Consult: GHD
 Civil Engineering Consultant:..... GHD
 Quantity Surveyor:..... Donald Cant Watts Corke
 Electrical Consultant:..... GHD
 Client:..... Queensland Health
 Other:..... Point Project
 Management

SILO SHOPPING CENTRE – AATHERTON

Job Value: \$1.2M

Job Description: Work involves an extension to the original shopping centre completed by Hutchies in 2009. This project includes demolition of some existing car park areas, identity signage and building elements to enable the construction of a new single-storey structure.

Hutchies' Team Leader:..... Paul de Jong
 Hutchies' Project Manager:..... John Parker
 Hutchies' Site Manager:..... Chris Watt
 Hutchies' Cost Planner:..... Chris Hattingh/ John
 Parker
 Architect Firm:..... Vabasis

DTMR TENANCY REFURBISHMENT – CAIRNS

Job Value: \$1.15M

Job Description: The project involves the refurbishment of the office space and amenity areas to six levels of the Cairns Corporate Towers building for the Department of Transport and Main Roads. The works are being undertaken over an 18-week program and will bring the building into line with current regulations and provide a modern aesthetic update.

Hutchies' Team Leader:..... Paul DeJong



Artist's impression of the new Woolworths under construction in the heart of Airlie Beach.



nder construction.

KING APARTMENTS CABOOLTURE

Job Value: \$2.5M

Job Description: The project is design and construct of 18 high level fit-out two-bedroom apartments over four storeys at 78 Lower King Street, Caboolture. The building is conventional construction type with slab on ground and three suspended slabs with reinforced concrete supports and block work.

Hutchies' Team Leader: Daniel Cooper
 Hutchies' Project Manager: Steven Hodgins
 Hutchies' Administrator: Steven Hodgins
 Hutchies' Site Manager: Mal Leeming
 Hutchies' Supervisor: Jamie Ison
 Hutchies' Cost Planner: Brett Russell
 Architect Firm: Cool Architecture
 Structural Engineering Consult: Rienmac
 Civil Engineering Consultant: Empire Engineering
 Quantity Surveyor: WD Surveys
 Electrical Consultant: RPG Consulting Engineers

Client: Spyre Group

WOOLWORTHS – PIMPAMA JUNCTION

Job Value: \$14,448,225

Job Description: This design and construct project is a new 3200m² Woolworths and 21-tenancy project at Pimpama. The project includes civil and landscaping works, construction of a new access road, car parking, lighting, signage, all associated infrastructure required to service the development and bulk earthworks and services connections to a future residential site. The project is due for completion by May 2014.

Hutchies' Team Leader: Russell Fryer
 Hutchies' Project Manager: Rob Diamond
 Hutchies' Administrator: Alistair Pillay
 Hutchies' Site Manager: David Wallace
 Hutchies' Cost Planner: Lawrence Versace
 Client Superintendent: Construction Assignments

Architect Firm: TRG
 Structural Engineering Consult: ADG
 Civil Engineering Consultant: Hyder
 Hydraulic Consultant: ADG
 Certifier: Bartley Burns
 Energy Efficiency Consultant: Dr Clyde Anderson
 Electrical D&C Contractor: Recom
 Mechanical D&C Contractor: Airmech
 Fire D&C Contractor: Champion Fire
 Client: Tipalea



WORK is continuing well on the carpark project at 111 Mary and 222 Margaret Streets in Brisbane since Hutchies took over the site in mid-March this year.

BBC MIDDLE SCHOOL

Job Value: \$13,335,059

Job Description: The BBC Middle School project is a design and construct contract which will enable the school to integrate year seven into the high school system from 2015. The project comprises of the demolition of part of the existing Junior School and building a new four-storey Middle School with basement classrooms and landscaping works associated with the Junior School oval and Middle School courtyard. The building has a contemporary design solution which complements the character of the school's campus with integrated learning as a focal point. The works are scheduled to be completed by the commencement of the 2014 school year.

Hutchies' Team Leader: Russell Fryer
 Hutchies' Project Manager: Rob Diamond
 Hutchies' Administrator: Luke Giles
 Hutchies' Site Manager: Shane Tyson
 Hutchies' Supervisor: Rob Gee & Rob Charles
 Hutchies' Cost Planner: Lawrence Versace
 Client Superintendent: Blades Project Services
 Architect Firm: Wilson Architects
 Structural Engineering Consult: Aecom
 Civil Engineering Consultant: Aecom
 Hydraulic Consultant: ADG
 Certifier: Certis

Electrical D&C Contractor: 240 Electrical
 Mechanical D&C Contractor: Cair

MACKAY MULTI-SPORTS STADIUM

Job Value: \$5.5M

Job Description: Construction of a sports facility comprising a three-court sports hall, associated amenities including toilets, showers and change rooms, administration areas, meetings rooms, store and plant rooms.

Hutchies' Team Leader: Levi Corby
 Hutchies' Project Manager: Dan Hall
 Hutchies' Administrator: Kathryn Pietrowiec
 Hutchies' Site Manager: Trevor Brazel
 Hutchies' Cost Planner: Brendan Kavanagh
 Architect Firm: PDT
 Structural Engineering Consult: STP Engineers
 Quantity Surveyor: Davis Langdon
 Electrical Consultant: GHD
 Client: Mackay Basketball Incorporated

QGCS GLADSTONE SUPPLY BASE

Job Value: \$4.5M

Job Description: Project is a new supply base to service the client's export facility on Curtis Island. As a design and construct contract, Hutchies has taken the project from the DA stage, through operational works approvals, building approval and construction.

Hutchies' Team Leader: Robert Weymouth
 Hutchies' Project Manager: Jason Williams
 Hutchies' Site Manager: Nathan James
 Hutchies' Site Foreman: Len Ward
 Hutchies' Site Safety: Scott Draman
 Hutchies' Site Admin: Petrina Inwood
 Hutchies' Safety Manager: Terry Charles
 Hutchies' Quality Manager: Rita Mann
 Architect Firm: Struxi
 Engineering (struct, hyd & civil): RMA
 Electrical Services: CV Services
 Mechanical Services: Coldfront Air-conditioning
 Fire Services: Auscoast Fire
 Client: QGC

HAPPY HAUS DARLINGTON

Job Value: \$260,179

Job Description: Construction and installation of a two-bedroom fully self-contained on piers Happy Haus designed home at Darlington, Brisbane, for practical completion earlier this year.

Hutchies' Team Leader: Russell Fryer
 Hutchies' Construction Manager: Rohan Barry
 Hutchies' Administrator: Scott Smithers
 Hutchies' Site Manager: Julian Batt
 Hutchies' Cost Planner: Luke Smith
 Architect Firm: Happy Haus
 Structural Engineering Consult: STA Consultants
 Client: Rob & Susan Overell

Hutchies' Project Manager: Greg Hampton
 Hutchies' Site Manager: Tony Doyle
 Hutchies' Cost Planner: Chris Hattingh
 Architect Firm: GHD
 Quantity Surveyor: Rider Levett Bucknell
 Electrical Consultant: GHD
 Client: Integra Asset Management

HARVEY NORMAN WAREHOUSE – BUNDABERG

Job Value: \$2.5M

Job Description: This warehouse facility comprises post tensioned slab to accommodate racking provided by client to store goods. The construction of the warehouse is concrete tilt panel, structural steel with a full internal concrete slab and has a loading dock to service deliveries and pick up. Construction will start in September and be completed in approximately 30 weeks.

Hutchies' Team Leader: Daniel Cooper
 Hutchies' Project Manager: Steven Hodgins
 Hutchies' Administrator: Steven Hodgins
 Hutchies' Site Manager: Ben Lund
 Hutchies' Supervisor: Ben Lund
 Hutchies' Cost Planner: Brett Russell
 Architect Firm: Blackburne Jackson Design
 Structural Engineering Consult: Empire Engineering
 Civil Engineering Consultant: Empire Engineering
 Electrical Consultant: Cushway Blackford
 Client: Harvey Norman



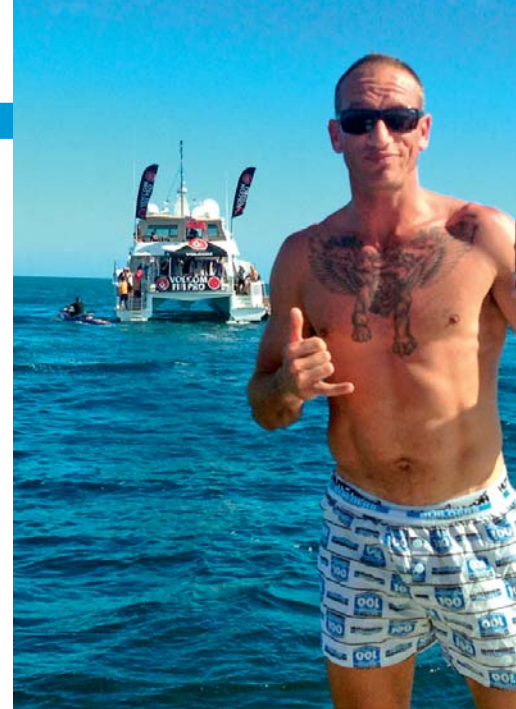
HUTCHIES is currently building a series of seven Water Gathering Stations (WGS) for Origin Energy in the Surat Basin. Shown is the first day's construction of a 12 megalitre Emergency Ballast Storage Tank (EBST) which is back up for the WGSs should the pumps fail. The EBST is 70 metres in diameter and has three-metre precast concrete walls with post tensioned steel cables running around the outside and finished with a poly liner.



Terry Charles faced the snow at Thredbo in his Hutchies' Undies.



Bob Tedford with Frostie the Snowman in his Hutchies' gear at Thredbo.



Michael Grech at the 2013 Volcom Fiji Pro surfing at Cloudbreak.



Flynn Connor Spry, born December 4, last year didn't take long to get into his Hutchies' Undies.

TRAVELLING UNDIES

LEFT: Samara Weaving, star of television's *Home and Away*, declined to brave the southern winter in Hutchies' Undies, but managed instead to turn a Hutchies' beanie into a glamorous fashion statement.



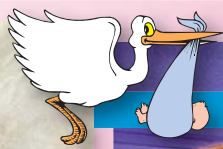
BELOW: SOME of Hutchies' team working on the Victoria Park project in Sydney put on an outstanding performance at Andrew Rowland's 40th. They are (from left) Michael Petracca, Peter Ciantar, Nathan Kairouz, Andrew Rowland, Julian 'Giraffe' Souva and Tori Ruggero.



LEFT: Karalee Ironside was competing in the Australian Swimsuit Model of the Year held recently at Runaway Bay Tavern. As one of the heats was themed, she decided to strap on the tools, slap on a Hutchies' hardhat and go as a carpenter.

Photo: Mr & Mrs Smith





HATCHED



Madison Jackeline Butler, first daughter for Melissa and Reece Butler, made her appearance on June 5.

Brooklyn Cienna Hill was born June 15 to parents Roly and Julmary Hill. She is twin sister to Farrah Rose who is in God's memory.

LEFT: Madeleine Jane Mckenzie, first daughter for Jeremy and Kate, was in a hurry to enter the world and arrived five weeks early, spending some time in the special care unit.

Wallabies wannabes

HUTCHIES' Berlese team hosted guests to a night at the rugby union to watch the Lions and Wallabies clash.

Shown enjoying the night out are Tim Ferguson and Jai Sessarago.



Hutchies' Greg Birnie with Renee Coghill, assistant referee in the National W League (left), and Lara Smith, referee in her first season in the league, at the cheque hand-over at Football Brisbane.

Support for rare species

FOOTBALL Brisbane has thanked Hutchies for a \$1000 donation to help the organisation develop its young and talented referees.

General manager of Football Brisbane, Reuben Robertson, said refereeing was an area that struggled to obtain adequate funding, although it was important to support and develop this rare commodity of the game.

"Hutchies can be assured that its support is immensely appreciated and its donation will be used wisely and for the purposes intended," said Reuben.

Hutchies' Greg Birnie, a registered referee with Football Brisbane, made the donation on behalf of Hutchies.

A bucking good time



All company team leaders met in Brisbane recently for the all-important annual business planning meeting. After business they let their hair down in Fortitude Valley, with Robert Weymouth showing how boys enjoy themselves on the Darling Downs – by having a bucking good time.

OBITUARY

PETER Bayer, architect and former director of the Buchan Group, passed away recently with his family by his side.

Hutchies' Harry White worked on projects with the Buchan Group, leaders

in retail architecture.

Harry described Peter as "not only a fantastic architect, but a true gentleman and a great bloke."

Hutchies' sympathy goes to Peter's family and friends.



Water polo's bronzed battlers

QUEENSLAND Women's Water Polo Team claimed bronze this year at the Australian Country Water Polo Championships held at the Australian Institute of Sport (AIS) in freezing Canberra.

Queensland were hell bent on defending the title won in 2012, but it was not to be.

Queensland went down in the semi-final to their arch rivals, New South Wales, and had to settle for playing off against Victoria for bronze.

The game was extremely physical and tight

with the score deadlocked at the end of four intense quarters.

Extra time could not separate the teams with the result decided by a nail biting penalty shoot-out, with Queensland victorious.

Even though Canberra was decidedly chilly, the Queensland girls (and male coach) were proud to represent the state in their Hutchies' gear. Team members thanked Hutchies for its continued sponsorship and support of the Queensland Country Women's Water Polo Team.



(L-R): Luke Puxley and Rob Tanielu battle it out in the "hand holding on a cold night" tournament.

Hands down winners

HUTCHIES' Grosvenor/Redpath crews held Hutchies' Arm Wrestling Championship 2013 recently in conjunction with the Moranbah Speedway.

Despite the event having three weight divisions so no-one was disadvantaged – grown men did cry.

Some battles were won and some were lost, but all in all the true champions prevailed and were awarded their trophies.

Paul Wachtel was the overall champion.

However, some of Hutchies' dazzling urbanites have dismissed the championships as just an excuse for the boys in the bush to hold hands on a cold winter's night.

This war of words could be the start of a national town versus country arm wrestling tournament.

Not down, down at lack of fish



WHILE the lack of fish may have left our keenest anglers a bit down on the recent Brisbane Men's Weekend, they had plenty of fun by making the colour 'red' a theme for the Saturday night's dinner.

Diners included Little Red Riding Hood, Red bellied black

snake, Red angry bird, Red clown, Red Indian, Red Captain Coles and Santa Claus.

The boys claim the fish were lucky this year with the rain and high winds.

And they have sent a warning to the fish ... 'we're back next year so look out!'



THE Westside Devils Legends Under 7s team proudly display their new Hutchies' sponsored shirts. Westside Devils is the junior club of Launceston City which play in the statewide league in Tasmania.

Great prizes to be won!

Scratch-its

If your Hutchies' Scratchie matches the lucky numbers listed you are a winner! To claim your prize telephone Hutchies on (07) 3335 5000.

Prizes compliments of Hutchinson Builders.

No.	Prize
7001	Hutchies T-Shirt
7152	Hutchies Undies
7235	Tape measure
7620	Hand Sander
7777	Hutchies Cap
7832	Jack's Tequila
8001	Paint brush set
8228	Hutchies T-Shirt
8315	Screw Driver Set
8452	Drill Bit Set

No.	Prize
8501	Hutchies Undies
8695	Chalk Line
8882	Jack's Tequila
9159	Paint brush set
9265	Hutchies T-Shirt
9422	Jack's Tequila
9574	Hutchies G-string
9665	Screw Driver Set
9810	Hutchies Undies
9999	Jack's Tequila

No.	Prize
10100	Tape measure
10268	Hutchies Cap
10300	Jack's Tequila
10405	Hutchies T-Shirt
10544	Hutchies Undies
10655	Hutchies T-Shirt
10714	Hutchies Undies
10800	Tape measure
10987	Hutchies Undies
11025	Hutchies Cap

No.	Prize
11560	Jack's Tequila
11980	Paint brush set
11984	Hutchies T-Shirt
12023	Screw Driver Set
12100	Drill Bit Set
12255	Hutchies Undies
12365	Chalk Line
12540	Jack's Tequila
12654	Paint brush set
12855	Hutchies T-Shirt

No.	Prize
12987	Hutchies G-string
13004	Screw Driver Set
13201	Hutchies Undies
13333	Jack's Tequila
13487	Tape measure
13556	Hutchies Cap
14866	Jack's Tequila
14901	Hutchies T-Shirt
14956	Hutchies Undies
15000	Chalk Line